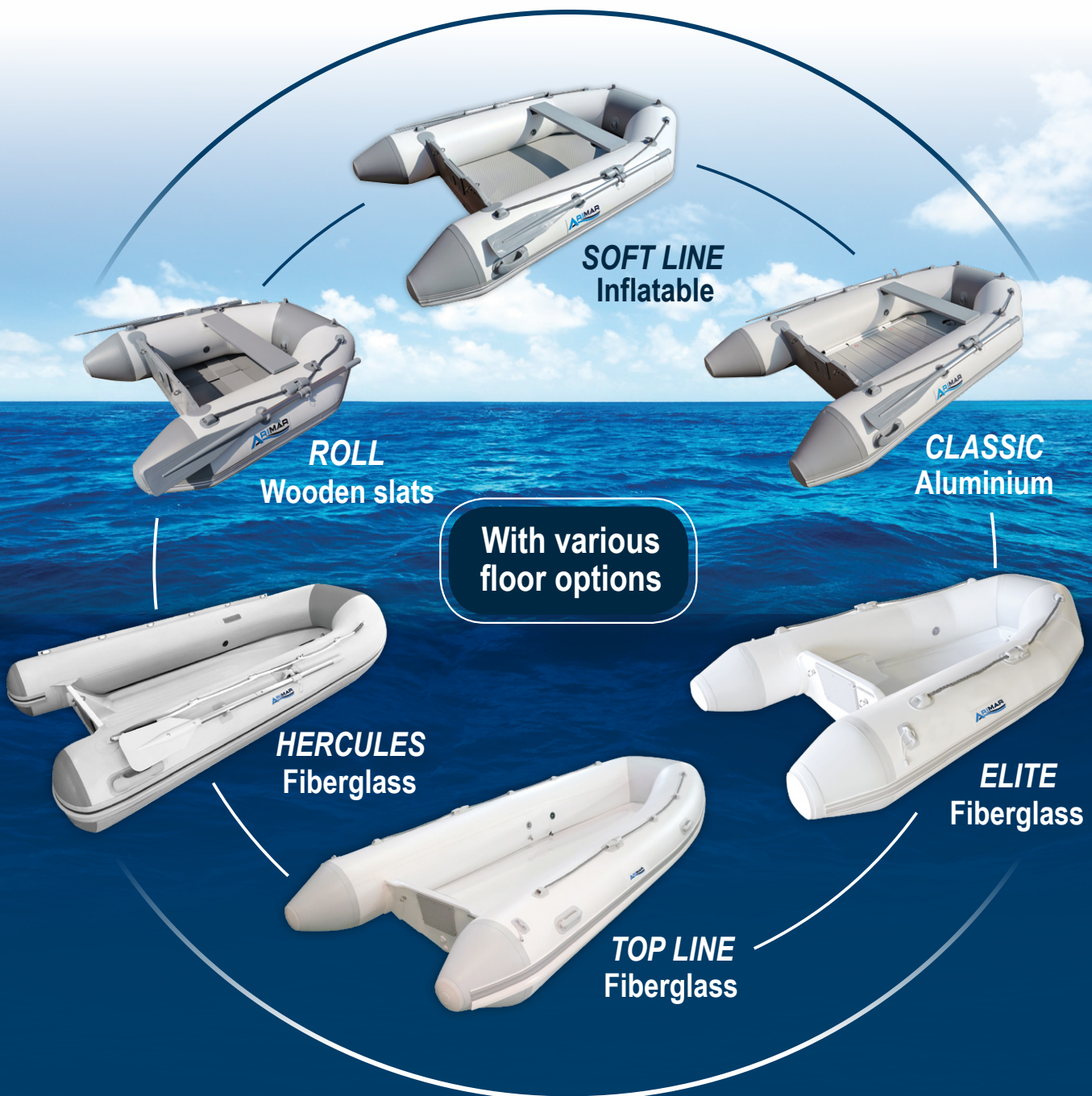




# *Inflatable Boats*

**Advanced stability • Comfort • Reliability**

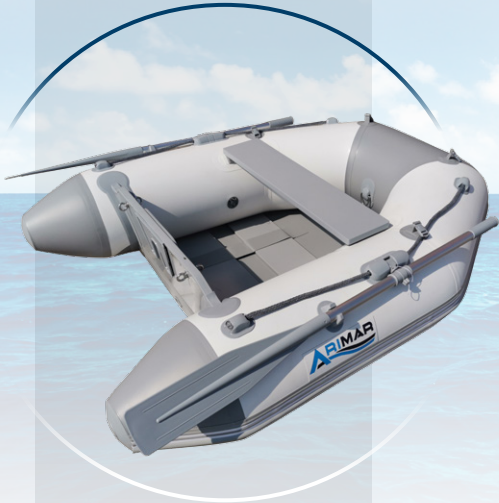


## Inflatable Boats

### ROLL

The best option for a small-sized, comfortable & easy-to-handle inflatable boat

- Easy transport & storage
- Simple & fast inflation
- Can be transported in a convenient **lightweight bag**
- **Ideal for boats with limited stowage space**
- Floor with **wooden slats**



Wooden slats

Code	501412	501413	501414
"ROLL"	ROLL 185	ROLL 210	ROLL 240
Passenger Capacity			
Max. Power (HP)	4	4	5,4
Engine Shaft	S	S	S
Floor	Wooden slats (2)	Wooden slats (3)	Wooden slats (3)
External Dim. (cm)	185 x 155	210 x 155	240 x 160
Internal Dim. (cm)	102,5 x 75	127,5 x 75	154 x 80
Tube Diameter (cm)	40	40	40
Tube Material	PVC	PVC	PVC
CE Category	-	-	-
Compartments	3	3	3
Standard Equipment	Repair kit, couple of oars, inflator, wooden bench, carrying bag		
Weight (kg)*	23,9	27	29,6

### SOFT LINE

The most popular one among our folding inflatable boats

- Easy-to-transport, stable & comfortable
- With inflatable keel that **reproduces the traditional V-shaped hull**
- **Much lighter** compared to others in its category
- **High-pressure inflatable floor**
- **"Easy System" technology** for easy folding without removing the floor



Inflatable

Code	501421	501422	501423
"SOFT LINE"	SOFT LINE 210	SOFT LINE 240	SOFT LINE 270
Passenger Capacity			
Max. Power (HP)	4	6	10
Engine Shaft	S	S	S
Floor	Inflatable	Inflatable	Inflatable
External Dim. (cm)	210 x 155	240 x 160	270 x 160
Internal Dim. (cm)	127,5 x 75	154 x 80	170 x 76
Tube Diameter (cm)	40	40	42
Tube Material	PVC	PVC	PVC
CE Category	-	-	D
Compartments	3+1+1	3+1+1	3+1+1
Standard Equipment	Repair kit, couple of oars, inflator, wooden bench, carrying bag		
Weight (kg)*	26,5	29,7	30,9

\* Mass to empty weight. This refers to the boat's mass, only with the floor/wooden slats & the seat already installed.

\*\* Given data subject to tolerances are +/- 2,5 % for dimensions, +/- 5% for weight.

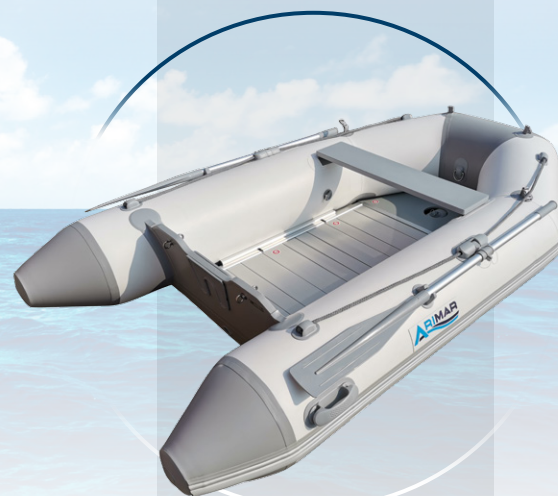
# Inflatable Boats



## CLASSIC

Steadiness & safety at their finest

- Great sturdiness
- Functionality and safety
- With inflatable keel that reproduces the traditional V-shaped hull
- Aluminium floor



Aluminium

Code	501416	501417	501418	501419
"CLASSIC"	CLASSIC 240	CLASSIC 270	CLASSIC 320	CLASSIC 360
Passenger Capacity				
Max. Power (HP)	6	10	15	25
Engine Shaft	S	S	S	S
Floor	Aluminium	Aluminium	Aluminium	Aluminium
External Dim. (cm)	240 x 160	270 x 160	320 x 170	360 x 170
Internal Dim. (cm)	154 x 80	170 x 76	220 x 86	258 x 82
Tube Diameter (cm)	40	42	42	44
Tube Material	PVC	PVC	PVC	PVC
CE Category	-	D	D	C
Compartments	3+1	3+1	3+1	3+1
Standard Equipment	Repair kit, couple of oars, inflator, wooden bench, carrying bag			
Weight (kg)*	41,3	42,4	51,8	58,1

## HERCULES

One-of-a-kind comfort & performance

- Advanced stability, safety & speed
- Wide space on board
- Can be used either as **tender or autonomous one**
- The best choice for coastal boat trips
- With fiberglass hull & anti-slip floor



Fiberglass

Code	501637	501638	501639	501640
"HERCULES"	HERCULES 200	HERCULES 240	HERCULES 290	HERCULES 310
Passenger Capacity				
Max. Power (HP)	4	5	10	15
Engine Shaft	S	S	S	S
Floor	Fiberglass	Fiberglass	Fiberglass	Fiberglass
External Dim. (cm)	202 x 147	245 x 160	290 x 154	310 x 154
Internal Dim. (cm)	124,5 x 71,5	172 x 70	210 x 70	234 x 70
Tube Diameter (cm)	36	43	43	43
Tube Material	PVC	PVC	PVC	PVC
CE Category	-	-	D	D
Compartments	3	3	3	3
Standard Equipment	Repair kit, couple of oars, inflator, wooden bench			
Weight (kg)*	33,5	46,5	61,5	66,5

\* Mass to empty weight. This refers to the boat's mass, only with the floor/wooden slats & the seat already installed.

\*\* Given data subject to tolerances are +/- 2,5 % for dimensions, +/- 5% for weight.

## Inflatable Boats

### ELITE

The most comfortable cruising experience for a tender

- Advanced stability, safety & speed
- Easy-to-manage
- Can be supplied with removable seat for extra comfort (ELITE 250 & 270)
- With **fiberglass hull & double flat floor**



Fiberglass

Code	501425	501428	501429
"ELITE"	ELITE 220	ELITE 250	ELITE 270
Passengers Capacity			
Max Power (HP)	4	6	8
Engine Shaft	S	S	S
Floor	Fiberglass	Fiberglass	Fiberglass
External Dim. (cm)	220 x 132 x 53	248 x 150 x 53	271 x 152 x 53
Internal Dim. (cm)	132 x 60	172 x 69	172 x 70
Tube Diameter (cm)	35	37	40
Tube Material	PVC	PVC	PVC
CE Category	-	-	D
Compartments	2	2	3
Standard Equipment	Repair kit, couple of oars, inflator		
Weight (kg)*	35	38	49

### TOP LINE

Advanced stability & comfortable cruising experience

- Advanced stability, safety & speed
- Comfortable cruising experience due to its **wide space** on board
- Ideal for coastal boat trips
- Can be used either as **tender or autonomous** one
- Can be supplied with a driving console and a pilot bench with pillow (TOP LINE 320 & 360)
- With **fiberglass hull & double flat floor**



Fiberglass

Code	501430	501431	501432
"TOP LINE"	TOP LINE 280	TOP LINE 320	TOP LINE 360
Passengers Capacity			
Max Power (HP)	10	15	25
Engine Shaft	S	S	S
Floor	Fiberglass	Fiberglass	Fiberglass
External Dim. (cm)	280 x 164 x 56	317 x 167 x 56	351 x 167 x 56
Internal Dim. (cm)	192 x 80	230 x 81	260 x 81
Tube Diameter (cm)	45/40	43	43
Tube Material	PVC	PVC	PVC
CE Category	D	D	C
Compartments	3	3	3
Standard Equipment	Repair kit, couple of oars, inflator		
Weight (kg)*	55	71	78

\* Mass to empty weight. This refers to the boat's mass, only with the floor/wooden slats & the seat already installed.

\*\* Given data subject to tolerances are +/- 2,5 % for dimensions, +/- 5% for weight.


# Inflatable Boats



## Rescue Boat

Ideal for lifeguard towers & academies

- Orange colour to be easily seen at sea
- Great sturdiness and safety
- Aluminium floor

Code	501642
"Rescue Boat"	Rescue Boat 330
Passenger Capacity	
Max. Power (HP)	15
Engine Shaft	S
Floor	Aluminium
External Dim. (cm)	330 x 170
Internal Dim. (cm)	230 x 86
Tube Diameter (cm)	42
Tube Material	PVC
CE Category	D
Compartments	3+1
Standard Equipment	Repair kit, couple of oars, inflator, wooden bench, carrying bag
Weight (kg)*	52,9

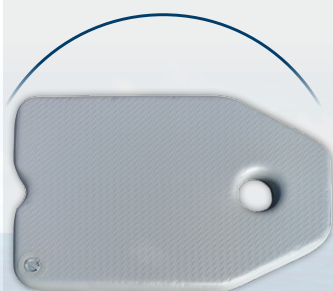


Aluminium

\* Mass to empty weight. This refers to the boat's mass, only with the floor/wooden slats & the seat already installed.

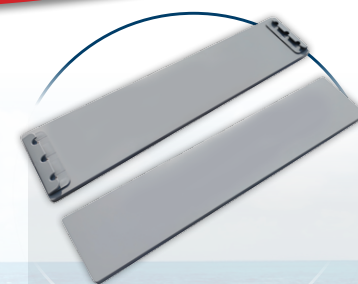
\*\* Given data subject to tolerances are +/- 2,5 % for dimensions, +/- 5% for weight.

# SPARE PARTS & ACCESSORIES



### Inflatable Flooring

Code	Compatible with
501973	SOFT LINE 210
501974	SOFT LINE 240
501975	SOFT LINE 270

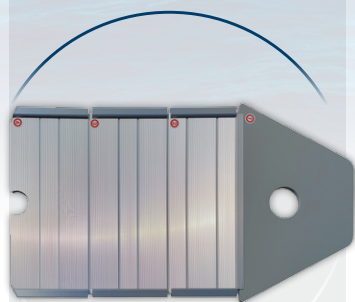


### Wooden Bench

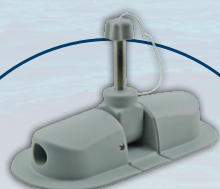
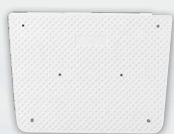
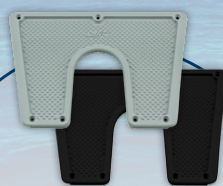
Code	Compatible with
501981	ROLL 185   210 SOFT LINE 210
501982	ROLL 240 SOFT LINE 240 CLASSIC 240 HERCULES 240
501983	SOFT LINE 270 CLASSIC 270 ELITE 270
501984	CLASSIC 320 Rescue Boat 330 TOP LINE 320
501985	CLASSIC 360 TOP LINE 360

### Aluminium Flooring

Code	Compatible with
501976	CLASSIC 240
501977	CLASSIC 270
501978	CLASSIC 320
501979	Rescue Boat 330
501980	CLASSIC 360



# SPARE PARTS & ACCESSORIES



## Transom Pad

Code	Colour	Length (mm)	Height (mm)	Thickness (mm)	Compatible with
74443	Black	270	180	10	ROLL 185   210   240
74444	Grey				SOFT LINE 210   240   270
					CLASSIC 240   270   320   360

Code	Colour	Length (mm)	Height (mm)	Thickness (mm)	Compatible with
74445	Black	300	120	10	ROLL 185   210   240
74446	Grey				SOFT LINE 210   240   270
					CLASSIC 240   270   320   360

## Transom Pad

Code	Colour	Length (mm)	Height (mm)	Thickness (mm)	Compatible with
45339	Black	270	98	8	ELITE 220   250   270
45337	White				TOP LINE 280   320   360
45338	Grey				

Code	Colour	Length (mm)	Height (mm)	Thickness (mm)	Compatible with
45331	Black	300	220	7	ELITE 220   250   270
45329	White				TOP LINE 280   320   360
45330	Grey				

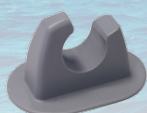
## Rowlock Socket with Metal Pin

Code	Colour	Compatible with
74447	Grey	ROLL 185   210   240 SOFT LINE 210   240   270 CLASSIC 240   270   320   360 ELITE 220   250   270 TOP LINE 280   320   360

## Heavy Duty Handle for Inflatable Boat

Code	Colour	Length (mm)	Height (mm)	Compatible with
74448	Grey	220	90	ROLL 185   210   240 SOFT LINE 210   240   270 CLASSIC 240   270   320   360 ELITE 220   250   270 TOP LINE 280   320   360

# SPARE PARTS & ACCESSORIES



## Rope Holder for Inflatable Boat

Code	Colour	Dimensions (mm)	Compatible with
74703	Grey	100 x 70 x 32,5	ROLL 185   210   240 SOFT LINE 210   240   270 CLASSIC 240   270   320   360 ELITE 220   250   270 TOP LINE 280   320   360

## Paddle Holder for Inflatable Boat

Code	Colour	Dimensions (mm)	Compatible with
74704	Grey	100 x 70 x 57,5	ROLL 185   210   240 SOFT LINE 210   240   270 CLASSIC 240   270   320   360 ELITE 220   250   270 TOP LINE 280   320   360

## Non-return Drain Valve Set, with Plug

Code	Colour	Transom Thickness (mm)	Compatible with
74449	Grey	25	Roll 185   210   240 Soft Line 210   240   270 Classic 240   270   320   360

## Paddle with Removable Blade

Code	Colour	Length (cm)	Diameter (mm)	Compatible with
74585	Grey	144,5	35	ROLL 185   210 SOFT LINE 210
74586		154,5		ROLL 240 SOFT LINE 240   270 CLASSIC 240   270
74587		174,5		CLASSIC 320   360

Code	Colour	Length (cm)	Diameter (mm)	Compatible with
50992	Grey	140	35	ELITE 220   250   270
50994		150		TOP LINE 280   320   360

## Inflating Valve

Code	Colour	Compatible with
98788	Black	ROLL 185   210   240 SOFT LINE 210   240   270
98966	Grey	CLASSIC 240   270   320   360 HERCULES 200   240   290   310

Code	Colour	Compatible with
500868	Black	ELITE 220   250   270
500867	Grey	TOP LINE 280   320   360

## Key for Valves

Code	Compatible with
98789	ROLL 185   210   240 SOFT LINE 210   240   270 CLASSIC 240   270   320   360 HERCULES 200   240   290   310



## Inflating Adaptor for Valves

Code	Compatible with
98970*	ROLL 185   210   240 SOFT LINE 210   240   270 CLASSIC 240   270   320   360 HERCULES 200   240   290   310 ELITE 220   250   270 TOP LINE 280   320   360

\* Provided with each ARIMAR Inflatable Boat assembled together. As spare parts, should be ordered / purchased separately.

\*\* Provided with each ARIMAR Inflatable Boat

## SPARE PARTS & ACCESSORIES



### Repair Kit for Inflatable Boats

Code

74705\*\*

It includes:

- PVC fabric, 2 pcs (150 x 200 mm grey & 150 x 200 mm white)
- Neoprene fabric, 1 pc (150 x 200 mm black)
- Glue tube 20 gr
- Key for valves



### Footpump 5lt

Code

50952\*



### Deck Support Kit

"A Type"

Code

500730

Compatible with

ELITE 250 | 270  
TOP LINE 320 | 360

"B Type"

Code

500731

Compatible with

ELITE 220  
TOP LINE 280



### Under Seat Storage Bag, Tenere Sit & Store

Code

70895

Colour

Grey



Suitable for all ARIMAR Inflatable Boats



### Boat Cover

Code

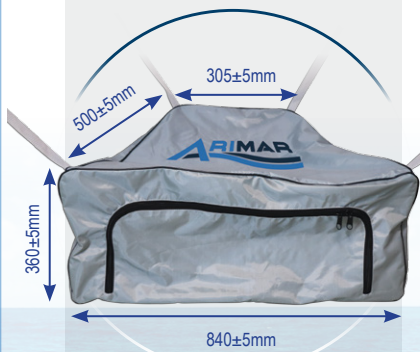
57351

Compatible with

ROLL 240  
SOFT LINE 240 | 270  
CLASSIC 240 | 270  
ELITE 250 | 270  
TOP LINE 280

57324

TOP LINE 320 | 360  
CLASSIC 320 | 360



### Bow Bag, Water-resistant

Code

501813

Compatible with

ROLL  
185 | 210 | 240  
SOFT LINE  
210 | 240 | 270  
CLASSIC  
240 | 270 | 320 | 360



### Adjustable Bench with Cushion

Code

500459

Compatible with

ELITE 250 | 270

Code

500506

Compatible with

TOP LINE 320 | 360



### Console with Cable Steering System

Code

500729

Compatible with

TOP LINE 320 | 360

### End Block, Material PP

Code

198202